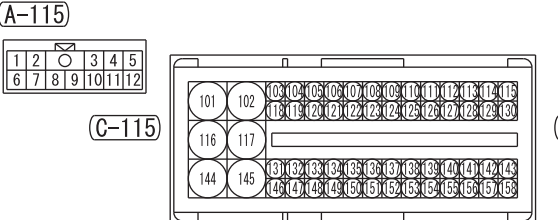
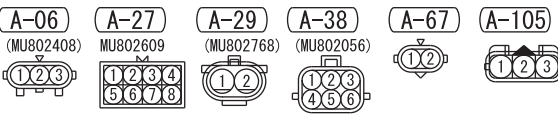
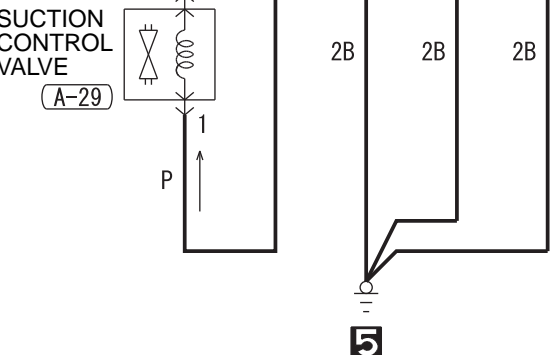
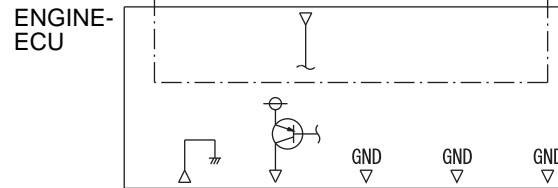
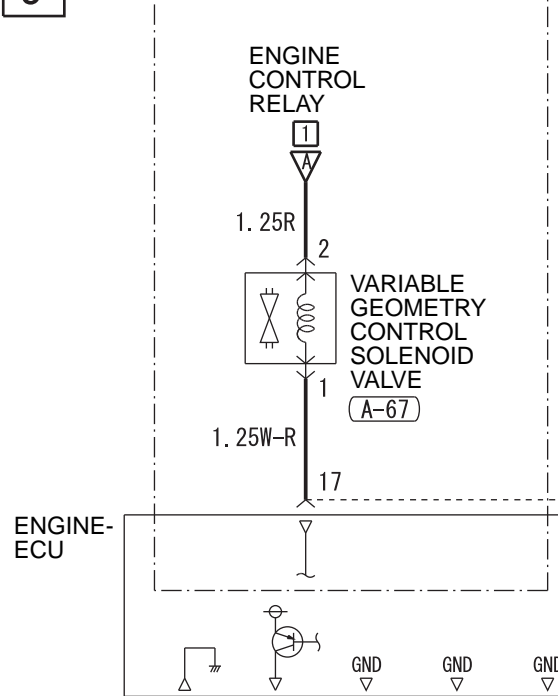
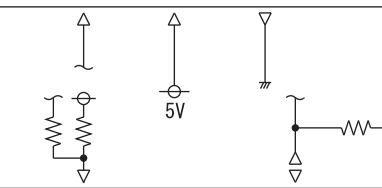
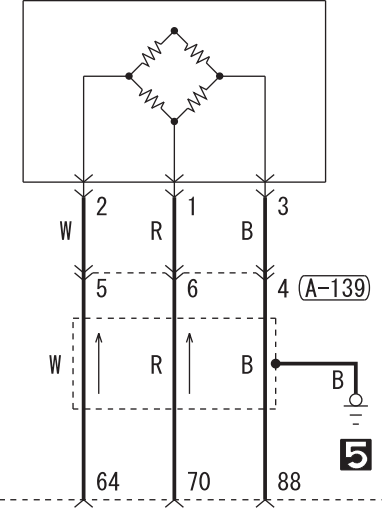


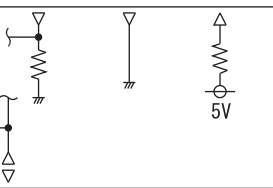
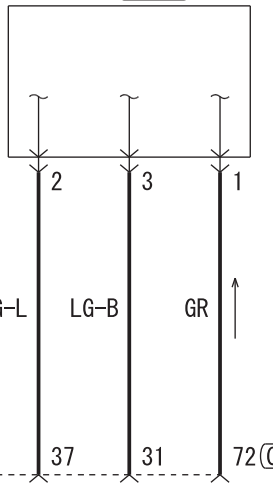
<VEHICLES FOR AUSTRALIA AND NEW ZEALAND>



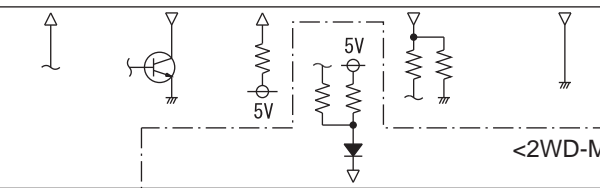
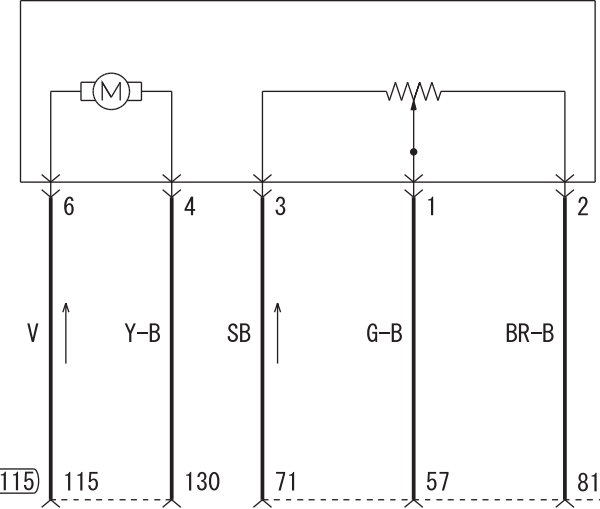
RAIL PRESSURE SENSOR (A-06)



MANIFOLD ABSOLUTE PRESSURE SENSOR (A-105)



EGR VALVE ASSEMBLY (A-38)



ELECTRONIC-CONTROLLED THROTTLE VALVE (A-106)

